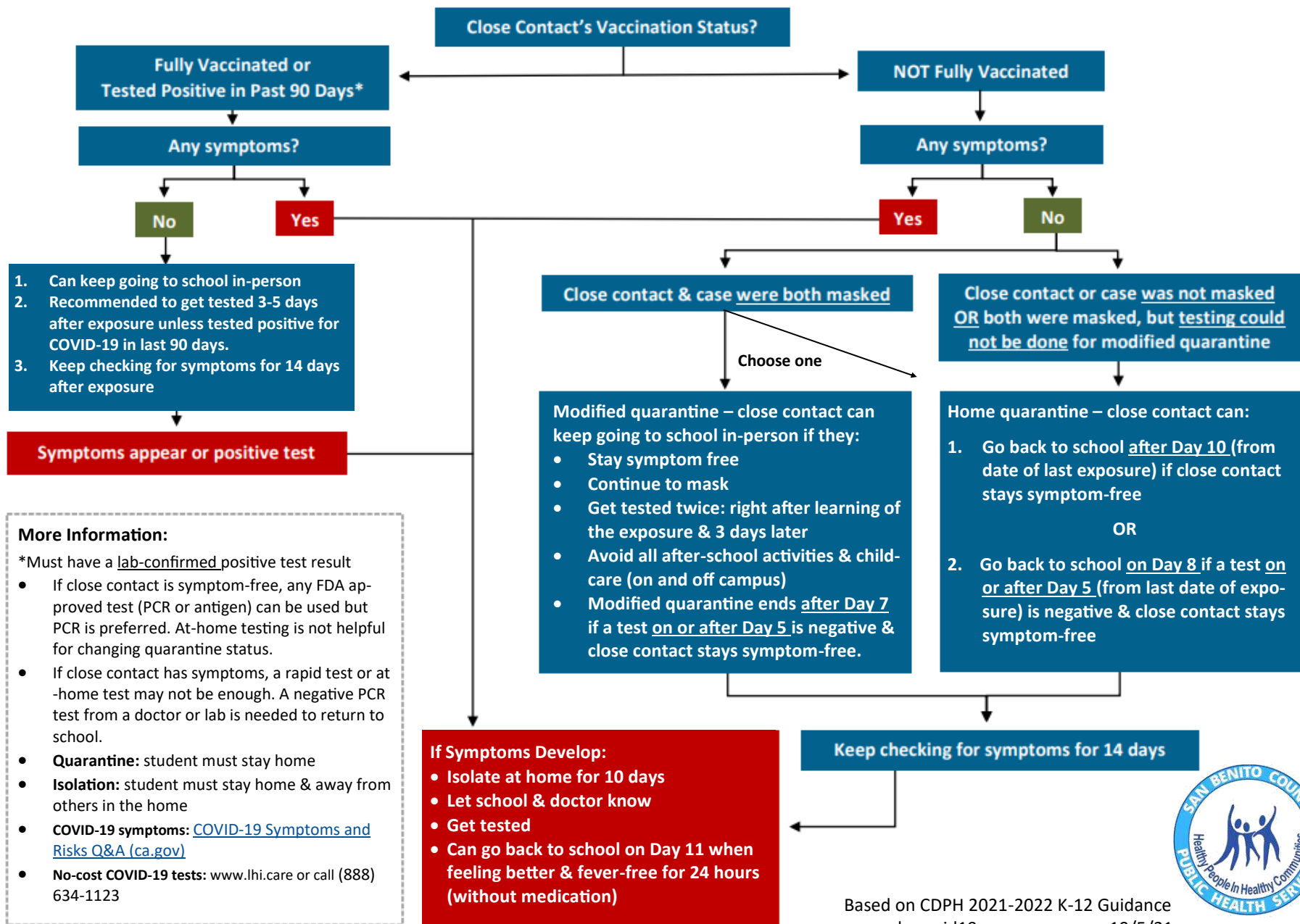


## A Student was Exposed to COVID-19 at School: What's Next?



**More Information:**

- \*Must have a lab-confirmed positive test result
- If close contact is symptom-free, any FDA approved test (PCR or antigen) can be used but PCR is preferred. At-home testing is not helpful for changing quarantine status.
- If close contact has symptoms, a rapid test or at-home test may not be enough. A negative PCR test from a doctor or lab is needed to return to school.
- Quarantine:** student must stay home
- Isolation:** student must stay home & away from others in the home
- COVID-19 symptoms:** [COVID-19 Symptoms and Risks Q&A \(ca.gov\)](https://www.cdph.ca.gov/Programs/CID/DCDC/Pages/COVID-19/Symptoms-and-Risks-FAQ.aspx)
- No-cost COVID-19 tests:** [www.lhi.care](https://www.lhi.care) or call (888) 634-1123

**If Symptoms Develop:**

- Isolate at home for 10 days
- Let school & doctor know
- Get tested
- Can go back to school on Day 11 when feeling better & fever-free for 24 hours (without medication)

Based on CDPH 2021-2022 K-12 Guidance  
[www.sbccovid19.us](https://www.sbccovid19.us) 10/5/21



\*If tested positive in past 90 days: Consult with a healthcare professional for testing