



SAN BENITO COUNTY

HEALTH & HUMAN SERVICES AGENCY

DAVID GHILARDUCCI, MD, FACEP
INTERIM HEALTH OFFICER

TRACEY BELTON
AGENCY DIRECTOR

PUBLIC HEALTH SERVICES

Healthy People in Healthy Communities

Demographics of COVID-19 Deaths

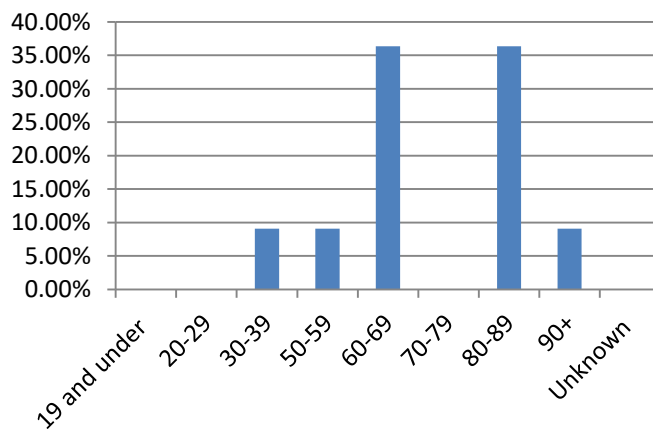
09/18/2020

The data in this dashboard shows information on the demographics and characteristics of COVID-19 related deaths, including: age, gender, race/ethnicity, and underlying conditions for deaths. One of the core areas of work in the Public Health Department is ensuring racial and health equity, understanding the social determinants of health, and how they impact health and health outcomes. Providing detailed demographic breakdowns enables Health Officers to determine appropriate actions to better prevent, control and slow the spread of COVID-19.

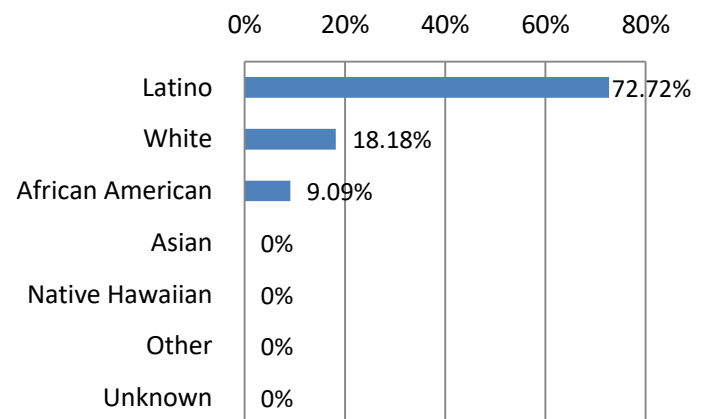
Total Cumulative COVID-19 Deaths:

11

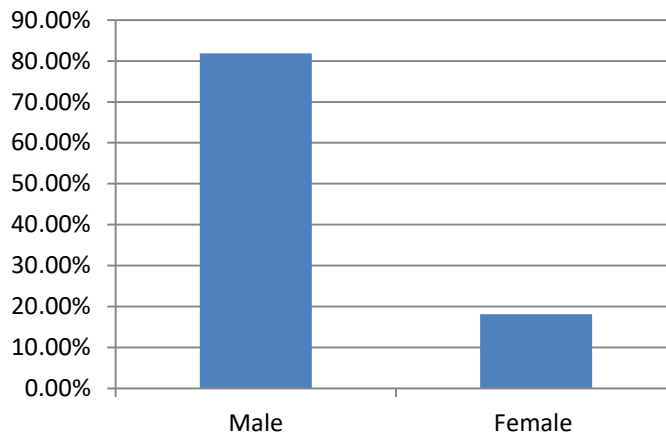
Deaths by Age Group:



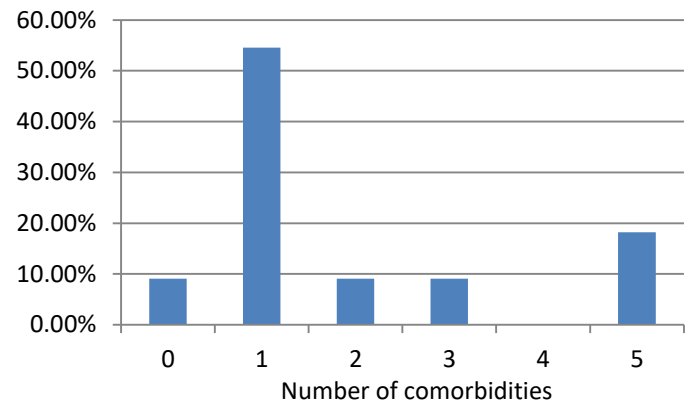
Deaths by Race/Ethnicity:



Death by Gender:



Deaths by Underlying Health Conditions:



PUBLIC HEALTH SERVICES
351 Tres Pinos Road, Suite A-202
Hollister CA 95023
831-637-5367

ENVIRONMENTAL HEALTH
351 Tres Pinos Road, Suite C-1
Hollister CA 95023
831-636-4035

MEDICAL THERAPY UNIT
761 South Street
Hollister CA 95023
831-637-1989